



Anthony Webb

Wauthier Close, Palmers Green, London, N13
Offers In Excess Of £500,000 Freehold

Anthony Webb
ESTATE AGENTS

Wauthier Close, Palmers Green, London, N13

Beautifully presented and extended two double bedroom plus loft room end of terrace house which has been greatly improved by the current vendors.

Wauthier Close is a quiet residential cul-de-sac turning located off Chimes Avenue and is conveniently situated for Palmers Green shops, restaurants, bus routes and mainline station into Finsbury Park and Moorgate. There are numerous green spaces/walks within easy reach including The New River, Hazelwood recreation ground and Broomfield Park. Hazelwood primary school is also short walk away.

Hallway with tiled floor • Through lounge with wood floor • Modern fitted kitchen • Extended dining room with tiled floor and folding doors to garden • Contemporary modern shower room • Main double bedroom with access to loft room • Second double bedroom • Double glazing • Gas central heating • Off street parking • Rear garden with artificial lawn, paved area, shed and side access.

Enfield Council Tax Band D

- Two double bedrooms+loft room
- Extended end of terrace house
- Through lounge
- Modern kitchen/diner
- Modern shower room
- Double glazing/gas central heating
- Off street parking
- Landscaped rear garden





Wauthier Close Palmers Green London N13 5HU

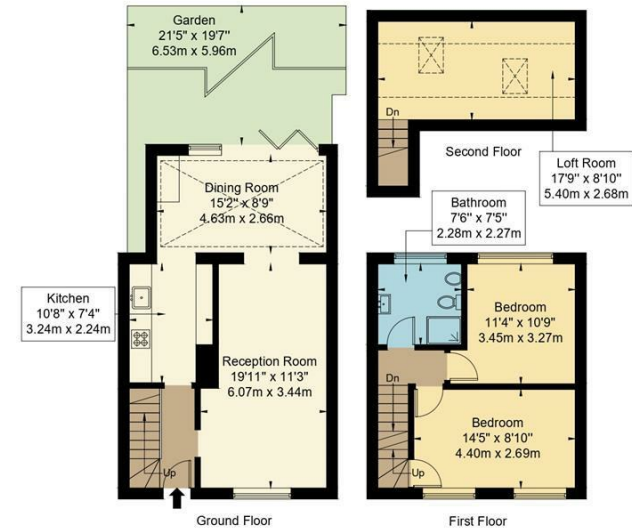
Tenure: Freehold
Gross Internal Area: 938.00 sq ft



Energy Efficiency Rating		Current	Potential
Very energy efficient - lower running costs			
(92 plus) A			82
(81-91) B			
(69-80) C			
(55-68) D		61	
(39-54) E			
(21-38) F			
(1-20) G			
Not energy efficient - higher running costs			
England & Wales EU Directive 2002/91/EC			
Environmental Impact (CO ₂) Rating		Current	Potential
Very environmentally friendly - lower CO ₂ emissions			
(92 plus) A			
(81-91) B			
(69-80) C			
(55-68) D			
(39-54) E			
(21-38) F			
(1-20) G			
Not environmentally friendly - higher CO ₂ emissions			
England & Wales EU Directive 2002/91/EC			

Wauthier Close, N13 5HU

Approx Gross Internal Area = 87.1 sq m / 938 sq ft
Restricted head height = 7.9 sq m / 85 sq ft
Garden = 39.8 sq m / 428 sq ft
Total = 134.8 sq m / 1451 sq ft



Ref :

Copyright **BLEUPLAN**

The Floor plan is not to scale and measurements and areas shown are approximate and therefore should be used for illustrative purposes only. The plan has been prepared in accordance with the RICS code of Measuring Practice and whilst we have confidence in the information produced it must not be relied on. If there is any aspect of particular importance, you should carry out or commission your own inspection of the property.
Copyright @ BLEUPLAN

Property particulars as supplied by Anthony Webb Estate Agents are set out as a general outline in accordance with the Property Misdescriptions Act (1991) only for the guidance of intending purchasers of lessees, and do not constitute any part of an offer or contract. Details are given without any responsibility, and any intending purchasers, lessees or third parties should not rely on them as inspection or otherwise as to the correctness of each of them. We have not carried out a structural survey and the services, appliances and specific fittings have not been tested. All photographs, measurements, floor plans and distances referred to are given as a guide only and should not be relied upon for the purchase of carpets or any other fixtures statements or representations of fact, but must satisfy themselves by or of fittings, gardens, roof terraces, balconies and communal gardens as well as tenure and lease details cannot have their accuracy guaranteed for intending purchasers. Lease details, service ground rent (where applicable) are given as a guide only and should be checked and confirmed by your solicitor prior to exchange of contracts. no person in the employment of Anthony Webb has any authority to make any representation or warranty whatever in relation to this property.

348 Green Lanes, Palmers Green, London N13 5TJ
020 8882 7888
palmersgreen@anthonywebb.co.uk
anthonywebb.co.uk

Anthony Webb
ESTATE AGENTS